

Seating

Standing

Sleeping

Therapy

Supine Stander 1 & 2 by Jenx

A robust standing system designed to provide unrivalled support, comfort and safety for children aged from approx. 9 months - 11 years



Always Supportive...

Supine Stander 1 & 2 by Jenx

The Supine Stander 1 & 2 by Jenx provides robust and easy to use standing solutions, unrivalled support and safety for children standing in a supine position for ages from approx. 9 months to 11 years, up to 50kg.

Standing is a dynamic process, and with this in mind, the Supine Stander has been specifically designed to allow joints to be supported yet mobile, whilst training balance and encouraging development. The frame and its features also provide durable quality, outstanding postural control and exceptional pelvic stability that is essential for encouraging supported standing.

The frame provides unlimited scope for setting the precise standing angle required for every user. Its smooth and easy angle adjustments take both sizes from horizontal to upright, facilitating quick and easy transfers. Furthermore, you can even remove all supports for added ease when hoisting.



INNOVATIVE FEATURE

De-rotational Thoracic and Pelvic Straps with Lateral Support Pads

Straps fasten in the centre and adjust independently from either side, enabling a mid-line position to be achieved and maintained. Buckles and hook and loop fasteners mean that once adjusted correctly, the straps can be fixed, making it difficult for siblings or classmates to tamper with and keeping everything looking neat and tidy!

Support Pads are available in a range of sizes including Flexible and High-rise options.

INNOVATIVE FEATURE

Board Removal

Both the Supine Stander 1 & 2 offer the opportunity to remove the polyurethane board sections. This allows a more discreet support surface whilst still offering great growth potential by reconnecting the boards when required. The removal of the boards also allows more precise head positioning when using the **Multigrip™ Head Support**.

INNOVATIVE FEATURE

Knee Support Pads

Complete with de-rotational knee straps and adjustable padding to comfortably accommodate fixed knee flexion in standing.

INNOVATIVE FEATURE

Polyurethane Boards

Flexible, easy to clean and impervious to fluids, polyurethane boards and **Support Pads** make the Supine Stander a breeze to clean and keep hygienic.

INNOVATIVE FEATURE

Base Size

The more compact base on the Supine Stander 1 is better suited to family homes where provision has yet to be made for the accommodation of equipment. It also offers a less intrusive and mechanical looking product for families who are new to this form of equipment.



INNOVATIVE FEATURE

Head Support

The **Head Pad Cushion with Side Support** connects directly to the polyurethane boards and provides extra comfort and stability for the user.

The Jenx **Multigrip™ Head Support** is also available; offering highly padded individual fingers, which mimic the infinitely adjustable support offered by caring hands. This can be adjusted to cushion, support and control almost any head position.

NB: the **Multigrip™ Head Support** can only be attached by removing the top board section.

INNOVATIVE FEATURE

Sandals

Available in 3 sizes, these ensure solid foot placement to give the foundation for effective leg positioning and safe standing. **Sandal**

Raising Blocks are also available to give the user height when needed or to accommodate leg length discrepancy.



Always Encouraging

Standing is a great way to improve the user's outlook on the world and their physical development.

Improves blood pressure & circulation



Helps digestion, bowel & bladder emptying



Encourages bone & muscle development



Gives a new perspective and ways to participate



Aids respiration & speech



Helps relieve pressure created during sitting



Supports pelvis, thighs & feet so children can join in everyday activities



Provides opportunities to increase social skills



Users gain huge psychological advantages from standing, as well as those important physical and development benefits.

INNOVATIVE FEATURE

Smooth & Simple Adjustments

Each user will have a slightly different posture in standing and will require different support. The angle of the support surface can be adjusted from horizontal through to upright, and because the adjustment is infinite, each Supine Stander can be set to exactly the right angle for all users. This allows progress to be monitored and the angle of the board altered in line with changes in ability.

For additional ease, the angle adjustment on the size 2 frame is power assisted, causing less strain for the carer.



Always Configurable Accessories

The **Supine Stander 1 & 2** by Jenx is a modular product, allowing you to choose specific accessories to meet the exact requirements of each user.

Supine Stander Frame

Basic Supine Stander unit includes:

- Base with 4 lockable swivel castors
- Polyurethane boards
- One piece footplate
- Boards available in 5 colours: blue, pink, green, red and grey.



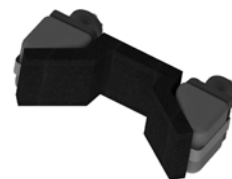
Multigrip™ Head Support

The original and innovative Jenx **Multigrip™ Head Support** is available in 3 sizes for all Jenx seating and standing systems. All Jenx **Multigrip™ Head Supports** have a choice of various highly flexible fixing brackets, all of which give adjustment for height, depth and angle.



Head Pad Cushion with Side Support

Provides simple head support with extra comfort and stability for the user. Consists of 2 small polyurethane **Support Pads** in a choice of colours and a black fabric padded head cushion.



Support Pads

Made from flexible and hygienic polyurethane, these **Support Pads** are easy to attach and adjust to provide hip and thoracic support. The **Support Pads** come complete with the appropriate size de-rotational strap as standard; enabling a mid-line position to be achieved and maintained.



High-rise Thoracic Support Pads

Adjustable for width, height and rotation (without the need for a tool) making it simple to get these support pads in exactly the right place to offer maximum lateral stability.



Flexible Thoracic Support Pads

These slimline and super flexible **Support Pads** (with straps) are designed to provide outstanding positioning with comfort in mind. All sizes are independently adjustable for height and width to ensure maximum trunk control.



Tray

The removable **Tray** comes complete with a removable bowl and **Reduced Cutout Tray Infill**.



Reduced Cutout Tray Infill

Designed to reduce the aperture for smaller children. Perfect surface for use with suction toys, anchors or grab bars and prevents even the slimmest of arms from falling into gaps.

Elbow Blocks

Used to encourage arms into a midline position and/or to block excessive retraction.

Knee Support Pads

Available in a range of sizes, complete with de-rotational knee straps; the **Knee Support Pads** remove the possibility of any internal or external knee rotation along with providing effective extension of the knee to facilitate a neutral standing position.

Flexion Knee Support Pads

Includes **Arched Foam Pads** to comfortably accommodate fixed knee flexion in standing. The **Flexion Knee Support Pads** include a unique de-rotational knee strap which removes any internal or external knee rotation and provides effective support for the knee to facilitate a safe standing position.

Arched Foam Pads

Used with **Flexion Knee Support Pads** for extra padding where required.

PU Spacer Blocks

For additional abduction or spacing on the **Flexion Knee Support Pads**. Fully moulded from hygienic polyurethane and simply use hook and loop fastener to attach into place.

Sandals

Available in 3 sizes, these ensure solid foot placement to give the foundation for effective leg positioning and safe standing. Jenx **Sandals** are interchangeable across the entire range of Jenx seating and standing products.

Ankle Snugs

An optional foot positioning accessory to the standard **Sandal**. The **Ankle Snug** offers a unique magnetic buckle fastening mechanism, which can be operated single handed.

Sandal Raising Blocks

Available for every size of Jenx **Sandals**, the **Raising Block** kits give the **Sandals** extra height where needed! Use to accommodate leg length discrepancy or use to raise the height of the footplate on any product to maximise the available growth.

NB: One kit needed per individual **Sandal**.





**INNOVATIVE
FEATURE**

Multi-use Tray

A useful surface for work, feeding or play, made from antimicrobial plastic providing a hygienic and easy to clean surface.

Supine Stander 1 & 2 by Jenx Technical Specifications

	Measurement	Units	Supine Stander 1	Supine Stander 2
Age Range	approx.	mths-yrs	9mths - 4yrs	3yrs - 11yrs
User Weight	max	kg	25	50
User Height	max	mm	1060	1460
Chest Width	min - max	mm	130 - 310	130 - 310
Hip Width	min - max	mm	130 - 310	130 - 310
Knee Pad Width	min - max	mm	130 - 310	130 - 310
Tilt-In-Space	supine	degrees	10° - 90°	10° - 90°
Footplate Angle	dorsi - plantar	degrees	0°	0°
Footplate to top of Support Board	min - max	mm	500 - 1070	900 - 1470
Support Board Size (all sections)	width x length	mm	480 x 940	480 x 1345
Footprint	width x length	mm	575 x 660	650 x 995

Find Your Distributor

To locate one of our
carefully selected
distributors, visit:

jenx.com/where-to-buy



@JenxLtd



@JenxLtd



@JenxLtd



Jenx Limited, Wardsend Road, Sheffield S6 1RQ, United Kingdom
tel: +44 (0) 114 285 3376
email: export@jenx.com
www.jenx.com

JENX[®] 
Positioning for life